

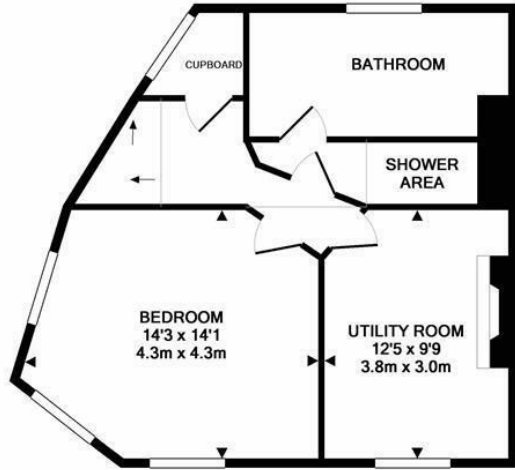
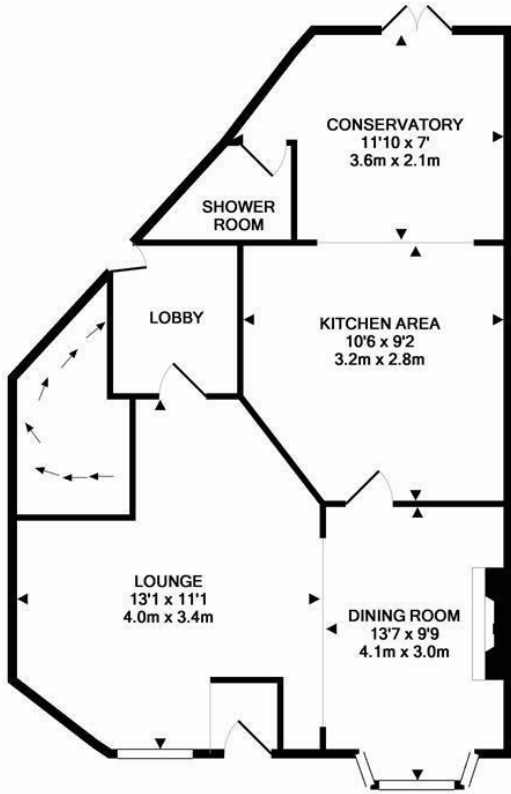


## North Terrace, Hastings TN34 3NR

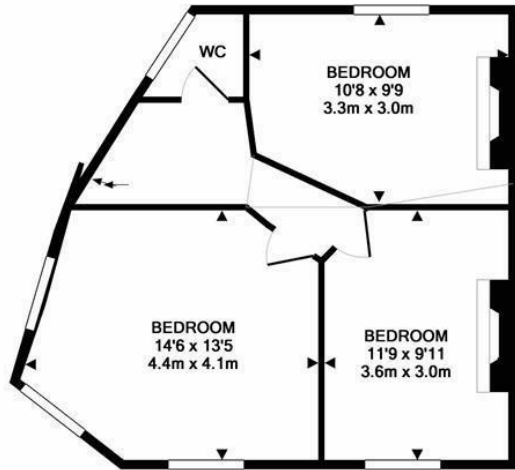
Offers in the region of £390,000



Bright and spacious four/five bedroom END OF TERRACE HOUSE with sea views located in a sought after position on the cusp of Clive Vale and the West Hill. It's enviably positioned within walking distance of Hastings Old Town, nearby shops in Ore Village and Hastings Country Park. Set across THREE STOREYS, the accommodation here offers a versatile layout and enjoys a wealth of features including HIGH CEILINGS and large windows to create a bright and sunny family home. The property is arranged as an OPEN PLAN LIVING SPACE which offers plenty of space for a full dining table and leads through to the FITTED KITCHEN where there is a CONSERVATORY offering additional dining space along with double doors leading out to the rear garden. There is also a shower room on this floor. The FOUR DOUBLE BEDROOMS are housed over the two upper floors with an additional toilet together with a MODERN FAMILY BATHROOM with a bath and separate shower enclosure while the loft has been converted to offer ADDITIONAL LIVING SPACE or occasional bedroom. There is also a UTILITY ROOM on the first floor which is currently being used as a



1ST FLOOR  
APPROX. FLOOR  
AREA 527 SQ.FT.  
(48.9 SQ.M.)



2ND FLOOR  
APPROX. FLOOR  
AREA 537 SQ.FT.  
(49.8 SQ.M.)

GROUND FLOOR  
APPROX. FLOOR  
AREA 839 SQ.FT.  
(77.9 SQ.M.)

TOTAL APPROX. FLOOR AREA 1902 SQ.FT. (176.7 SQ.M.)

Whilst every attempt has been made to ensure the accuracy of the floor plan contained here, measurements of doors, windows, rooms and any other items are approximate and no responsibility is taken for any error, omission, or mis-statement. This plan is for illustrative purposes only and should be used as such by any prospective purchaser. The services, systems and appliances shown have not been tested and no guarantee as to their operability or efficiency can be given.  
Made with Metropix ©2017

